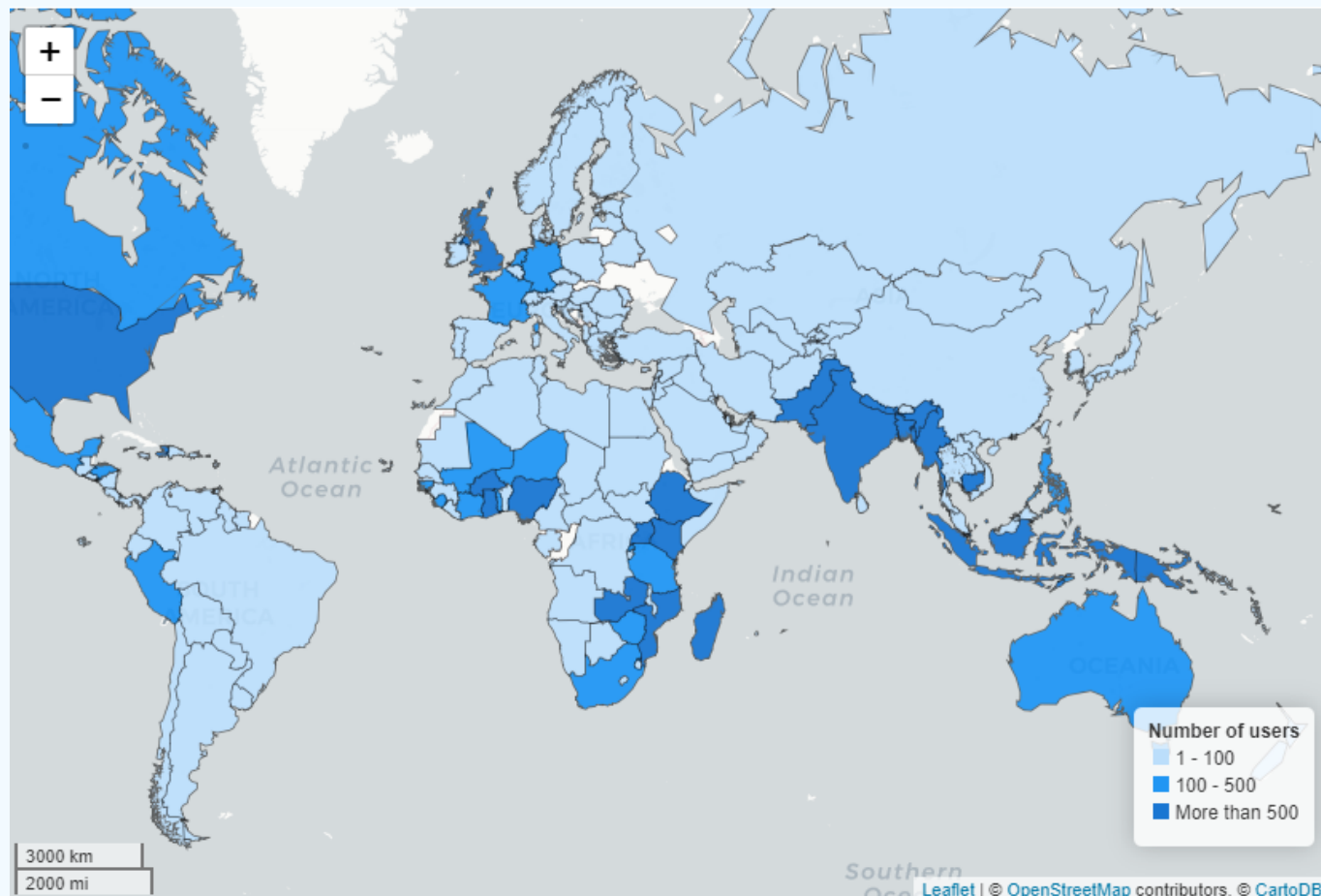


mWater introduction

OVERVIEW

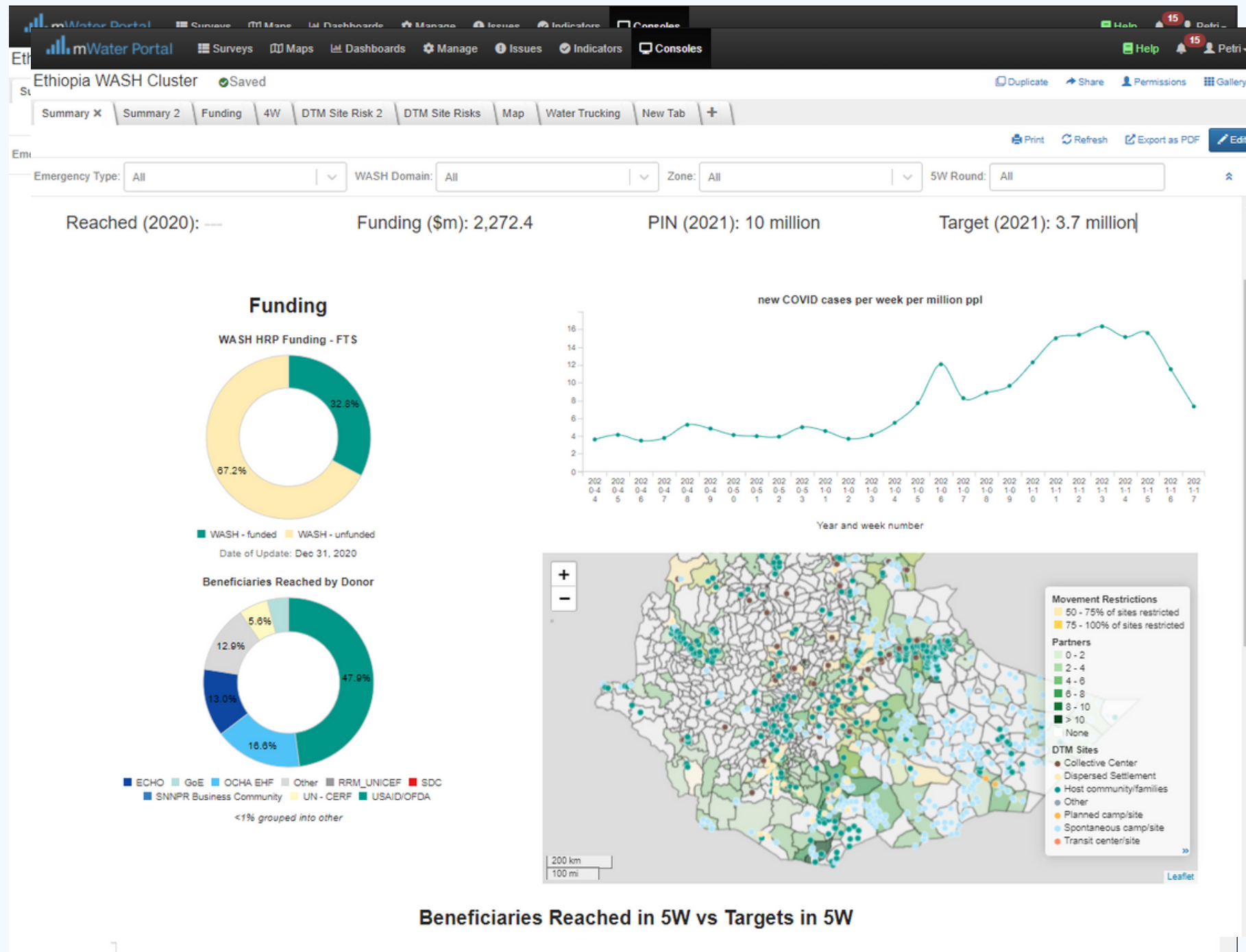
Where are we today



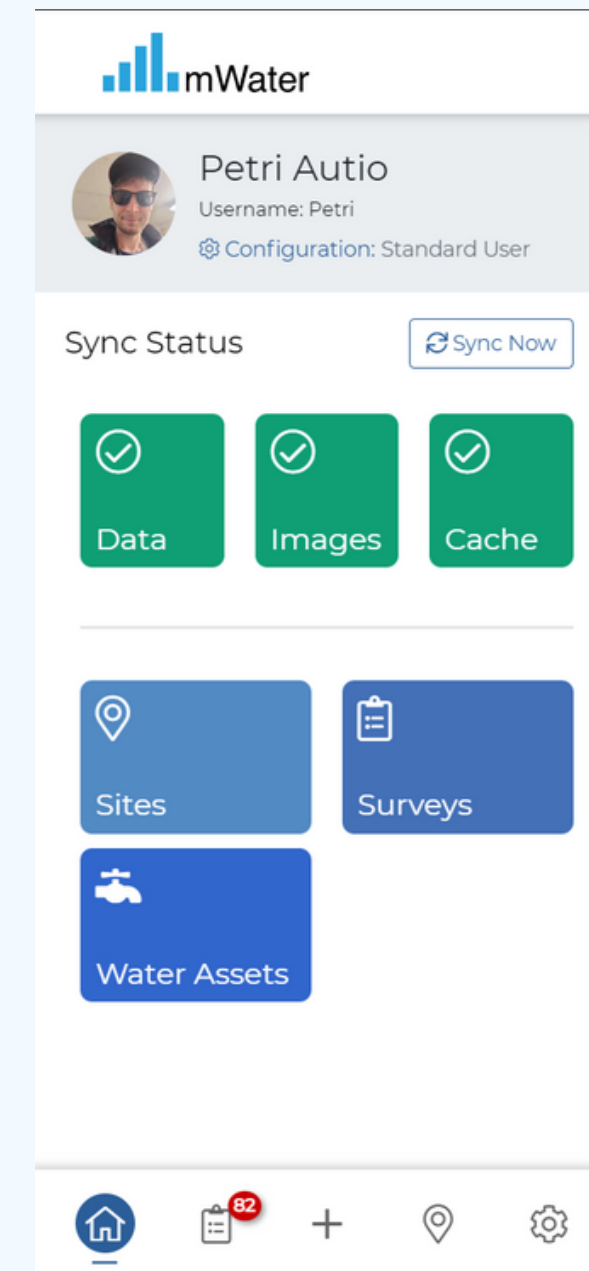
Users by country

- The leading free solution for WASH data collection and management
- Free to use turn-key data management platforms
- 190,000+ users in 200 countries
- Used by governments, utilities, local and international NGOs, businesses and academics
- Designed by WASH experts = mWater
- Expanded to cover all sectors = Solstice

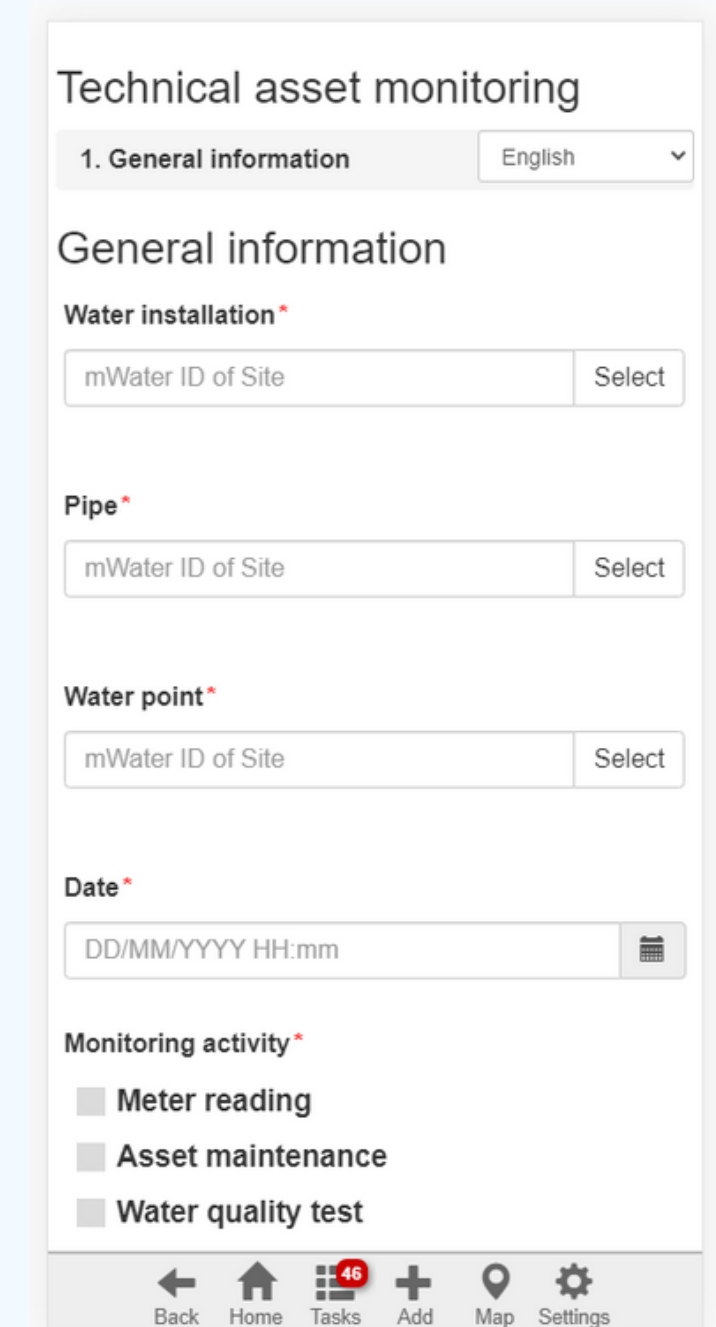
PORTAL AND APP



Portal: Survey design, data management, user management

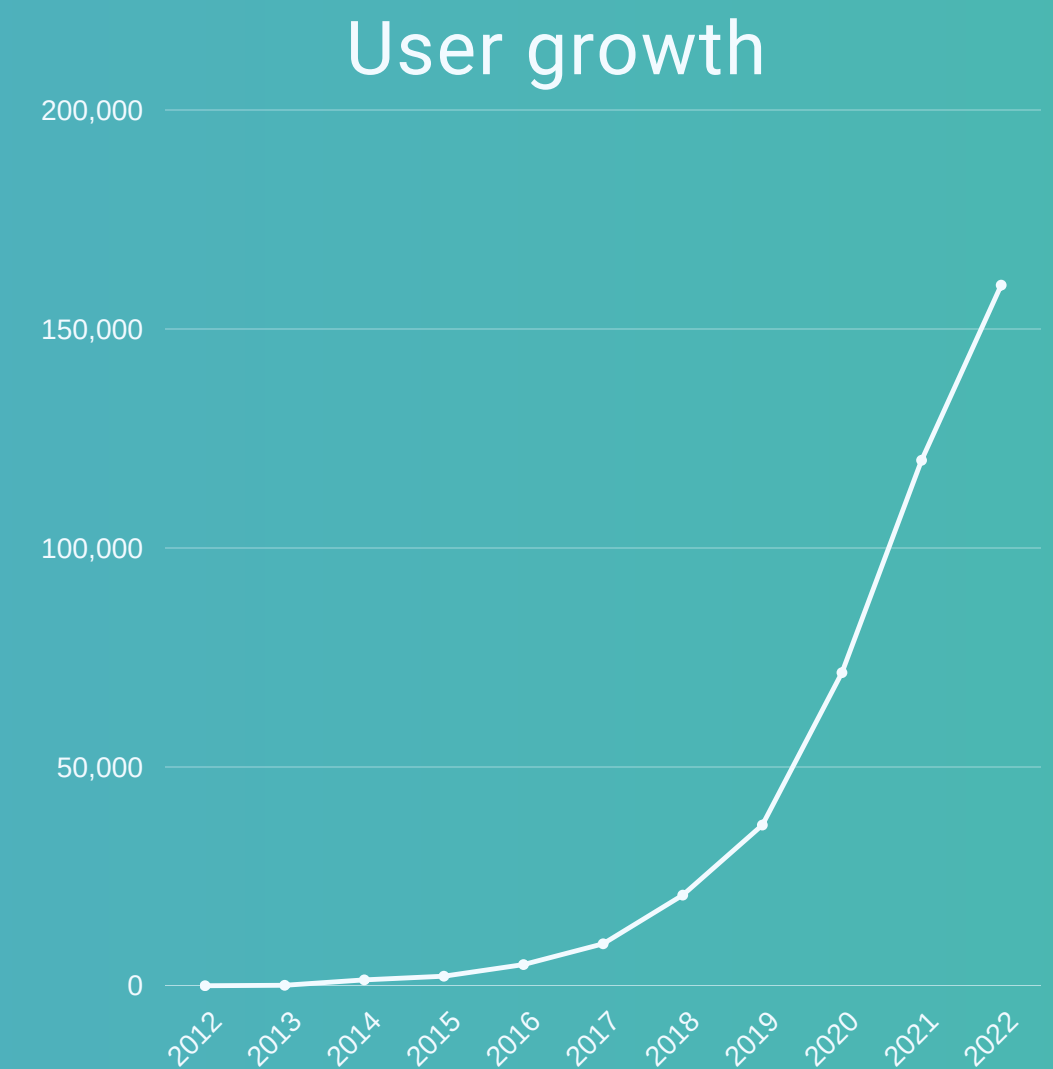


App: Data collection, infrastructure monitoring, issue / ticket resolution



Key Features

- **Design any survey**, in any language
- **Track infrastructure** as sites and asset systems
- Easy data collection over time
- **Free** to use, forever
- Shared server: **Safe, scalable, always available**
- Mobile data collection **online** and **offline**
- **Manage, Visualize and Map**
- Track organizational or global **indicators** such as SDGs
- **Import** and **export** data at any point



BUSINESS MODEL

1% of paying users keep platform free for the rest

- A positive spiral: **Free, high quality software** contributes to strong growth
 - Expanding user base attracts **R&D investment** from parties interested in sustainable solutions to data management problems
 - **New features are generalized** to add value to all users
 - **Platform stays cutting edge and free**, and user growth accelerates, drawing in more investment from parties who can pay
- + **Lean, highly skilled team** plus **robust cloud architecture** keeps costs low even as use expands strongly
- + Other sources of income: **Setting up partners for success, turn-key Management Information Systems**



SETTING UP FOR SUCCESS

Basic partner package: Custom config + Training + Consulting

- Training enumerators and administrators, including advanced features
- Collaborating on setting up surveys, data management, organizations, indicators, visualizations
- Unlock paid features: Custom app configs with your branding and many benefits

One off fee: \$25k

Management Information Systems

- As custom as the partner requires. Building on free mWater features with much more capability still.
- Can be a separate website

Starting \$50k

EXAMPLE MIS - CRS AZURE

The screenshot shows a web browser at the URL azurewater.org/#/wherewework. The navigation menu includes 'About Us', 'Impact', 'Where we work', 'Press', 'Library', 'Contact', and 'M&E'. The main content area features a large image of a waterfall with the heading 'Our Presence' and the text: 'The Azure model is mobilizing technical services and capital to expand and improve water and sanitation services in rural communities and small cities in Latin America.' Below this is a section titled 'Our Presence' with a sub-heading 'Water Service Providers Map'. The map displays Guatemala with various locations marked by purple dots (Azure systems) and red dots (WSPS with stories). A legend in the bottom right corner identifies these markers. A scale bar for 50 km is visible in the bottom left of the map area.

Our Presence

Water Service Providers Map

About the Map

Who uses mWater?

GOVERNMENTS

Local and national governments are making use of the platforms at scale in different parts of the world, for example in Guinea Bissau, Malawi, Papua New Guinea, Ethiopia and Haiti.

NGOs

Local and International NGOs use mWater and Solstice to conduct some or all of their field data management, or operational tracking.

UTILITIES

Water utilities are picking up mWater and making use to manage their assets and operations.

ACADEMICS

University departments and students use the platforms to conduct research and collect field data.



Connect with us



FACEBOOK

<https://www.facebook.com/Solstice.World/>



TWITTER

<https://twitter.com/mwaterco>



LINKEDIN

<https://linkedin.com/company/solsticeworld>